

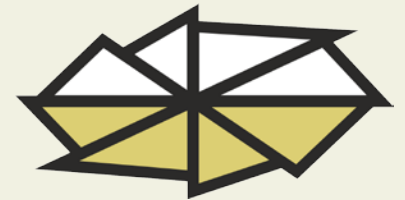
DESCRIPTION OF 1ST WORKSHOP

CSA PODPOĽANIE, SLOVAKIA

WP4

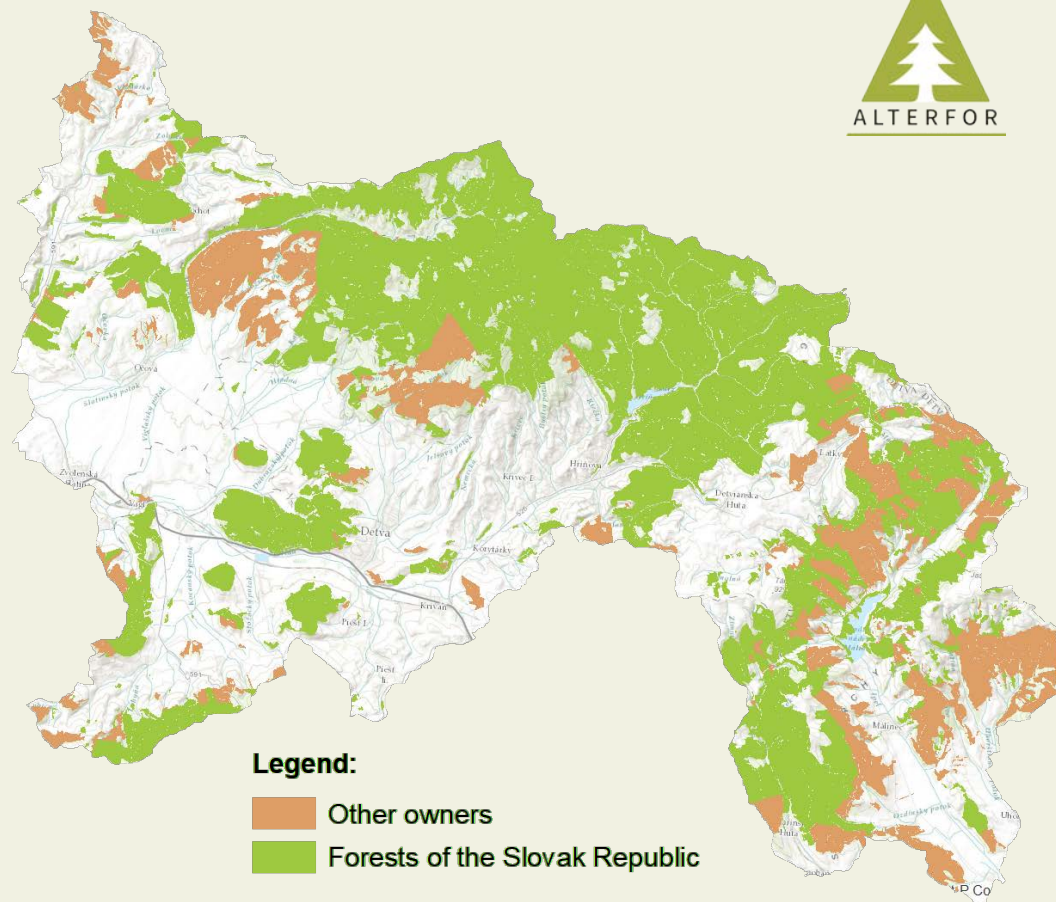
Róbert Smreček, Yvonne Brodrechtová, Ján Tuček,

Róbert Sedmák, Ján Bahýľ, Michal Bošeľa



1st workshop

- 16 May, 2018
- Technical University in Zvolen



Partner

- State owned forest enterprise **Forests of the SR** *managing*:
 - 46% of forests in Slovakia
 - 76% of forests in CSA *Podpol'anie*



Participants of the 1st workshop

- 30 stakeholders (almost 100 invitations mailed out)
- Participation from national and regional level
 - Forests and environmental policy makers
 - State and non-state forest owners
 - Forestry related associations
 - Environmental conservation organization
 - Forestry related business
 - Forest/environmental research and education organizations
- No participation from Environmental NGOs



Photo: Róbert Smreček

Participants characteristics

Actor	National level	Regional level
Forestry related governmental actors	1	1
Nature protection and conservation related governmental actors	7	7
State forest owners	1	1
Non-state forest owners		1
Forestry related non-governmental actors	6	2
Nature protection and conservation related non-governmental actors		
Bussiness		3

Topics of the 1st workshop

1. Portrayal of current forest management practices through ten FMM, their grouping into five management concepts and their application on *CSA Podpol'anie*
2. Quantification and comparison of ES provisioning by FMMs through six ES groups
3. Depiction of forest management planning and challenges for forestry in the future from project's partner (*Forests of the SR*) point of view
4. Presentation of alternative FMMs and alternative multi-criterial approach for decision making in the forest planning

Goals of the 1st workshop

- Collection of different stakeholders' preferences regarding the forest management concept and ES
- Based on presentation of preliminary research results concerning current FMMs and ES, collection of data concerning stakeholder's expectations towards alternative FMMs

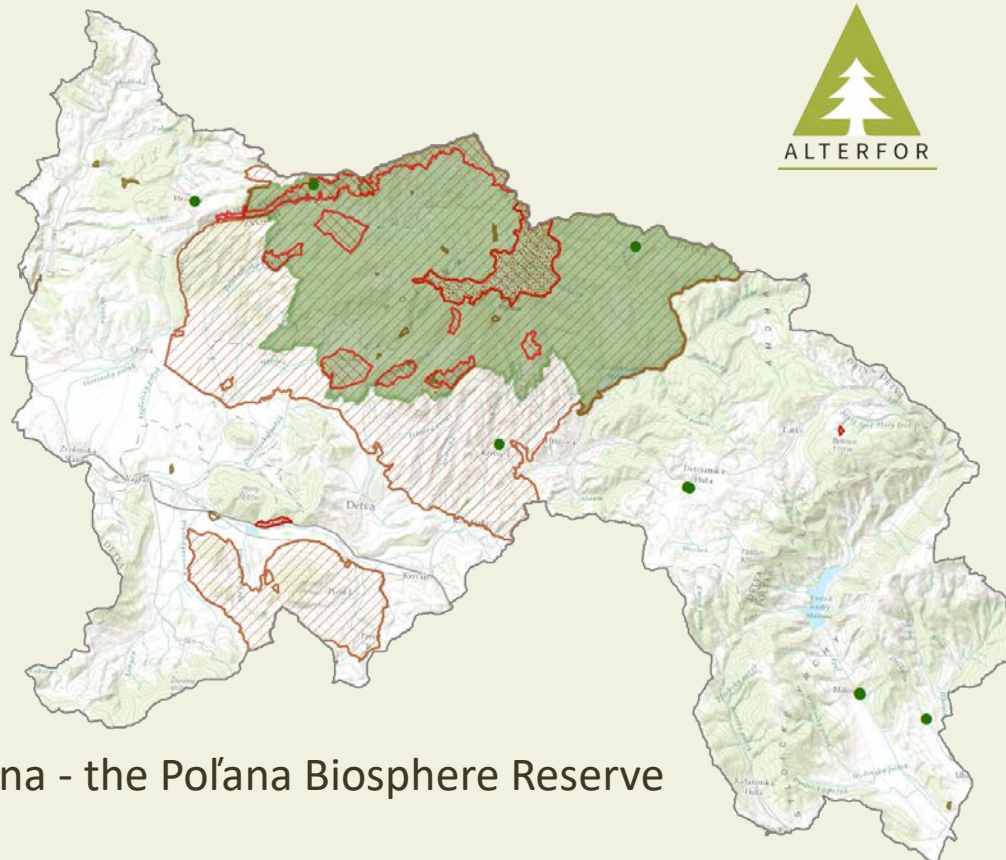
		DRUHÉ KRITÉRIUM				
		Pasivny manažment	Aktivna ochrana environmentu	Prírode blízky manažment	Rovnoveké prirodzené porasty	Rovnoveké zmenené porasty
PRVÉ KRITÉRIUM	Pasivny manažment	■				
	Aktivna ochrana environmentu	⊗	■			
	Prírode blízky manažment	⊗	⊗	■		
	Rovnoveké prirodzené porasty	⊗	⊗	⊗	■	
	Rovnoveké zmenené porasty	⊗	⊗	⊗	⊗	■



Photo: Pavol Koreň

What did we achieve?

- We gathered preferences regarding forest management concept and ES from different stakeholders groups concerning:
 - better distribution of FMMS in behavioural matrices
 - possible assessment of ES provisions suitability for different stakeholders at landscape level in different scenarios
- Productive discussion about aFMMS
- Consensus regarding alternatives and ideas with our project partner (*Forests of the SR*)
- Project and organizational support from project partner (*Forests of the SR*)
- Useful dissemination of ALTERFOR project's approach and research aim to the stakeholders



Planned 2nd workshop

- September 2018

Workshop partner

- Protected Landscape Area Poľana - the Poľana Biosphere Reserve

Protected areas within Case Study	Area [ha]*	% of CSA*
Area Podpoľanie		
Protected Landscape Area (CHKO)	12 443	18.4
Special protection areas (CHVÚ)	21 687	32.1
Special areas of conservation (ÚEV)	2 082	3.1
Small protected areas (MCHÚ)	898	1.3
Total area of CSA	67 532	

Legend:

- Protected tree
- ▨ Special areas of conservation
- ▧ Special protection areas
- ▩ Small protected areas
- Protected Landscape Area Poľana

*Overlaps exists

Topics and goals of the 2nd workshop

- Presentation of ES provisioning at landscape level in different scenarios
- Comparison of cFMMs and aFMMs properties
- Finding an answer to the question „How to implement a new FMMs?“
- Finding possible alterations to current forest policy



THANK YOU!